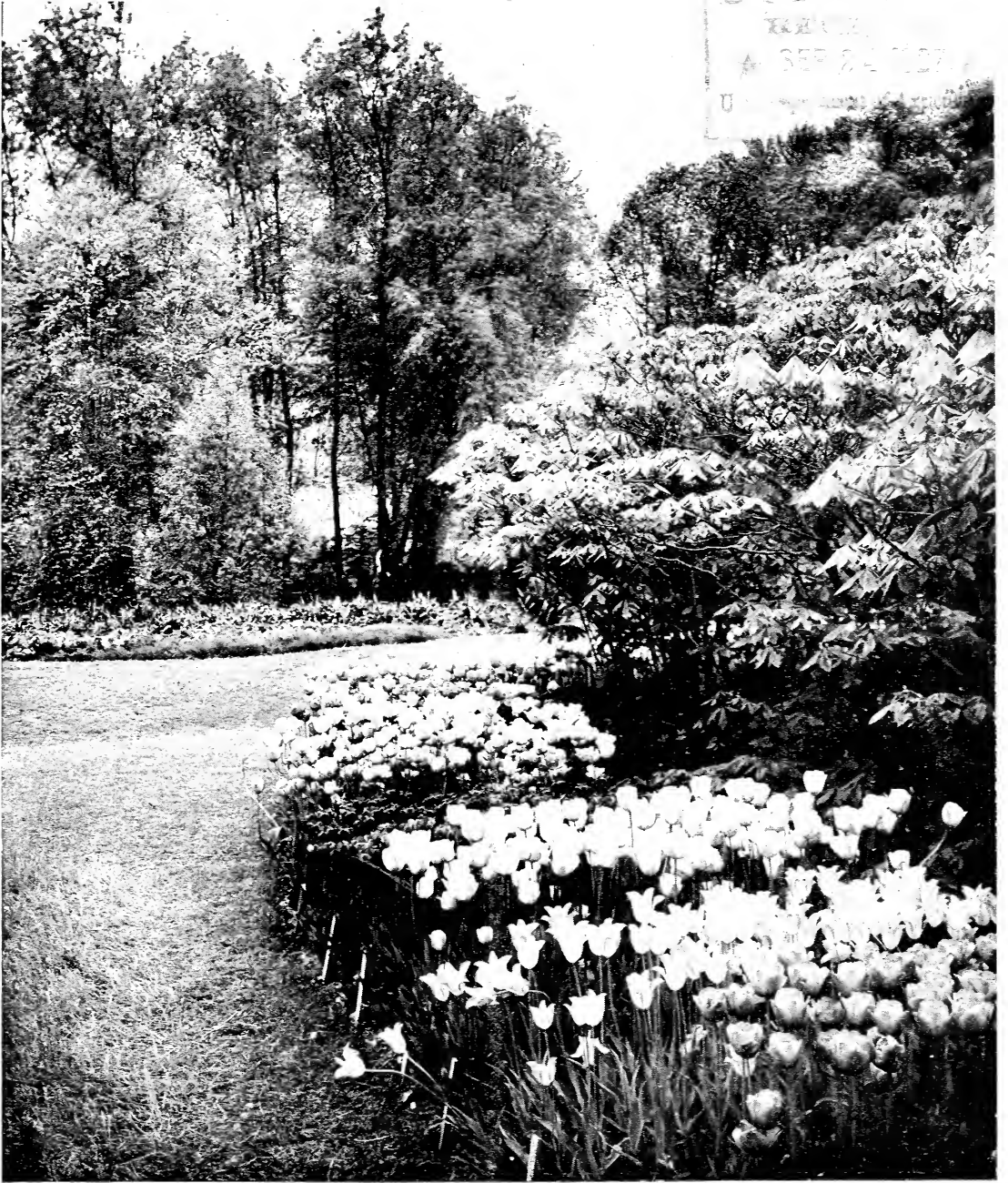


## **Historic, Archive Document**

Do not assume content reflects current scientific knowledge, policies, or practices.



62.41



# *Bulbs for Fall Planting*

1927

Holland-American Seed Co.  
24 Fulton Street  
Grand Rapids, Michigan



Darwin Tulips.

## The Tulip Industry

in Holland dates back hundreds of years and the climate and soil are just right for producing bulbs of the finest quality. The growers are very careful in selecting planting stock of healthy bulbs and great care is given them during the growing and harvesting season. With the exception of Narcissus and Daffodil bulbs which are prohibited from being shipped to this country for commercial purposes, we import all our bulbs direct from Holland and we have had splendid results in the past years with our bulbs as the great care and long experience of the Dutch growers enable them to raise bulbs of the finest quality.

### NON - WARRANTY

We take great care in selecting and testing our seeds, but as so many conditions enter into making a crop, such as weather conditions, etc., over which we have no control, we give no warranty, expressed or implied, as to purity, description, quality, productiveness, or any other matter of any seeds, bulbs, or plants we send out and will not be responsible for the crop. If the purchaser does not accept the seed on these terms they are at once to be returned.

### SPECIAL NOTICE

All prices on bulbs are prepaid, no extra charge for postage. Order early as we may be sold out of some of the choice varieties later in the season. Mail orders promptly taken care of. Six bulbs of any one variety at the dozen rate; 50 bulbs at the 100 rate.

# TULIPS

## Cultural Directions

Bulbs may be planted any time from September until the ground is frozen solid. They succeed in any good garden soil, and while it is more desirable to have a light, sandy loam, this is not as essential as having the soil, no matter what its quality, in a well-spaded and prepared condition, and to furnish the proper drainage conditions if planted in a situation where water has a tendency to stand at any time. Plant four inches apart and four to five inches deep. Tulips are perfectly hardy, so that only a slight protection is required during the cold Winter months.

## For Culture in the House

Plant from September to December in rich, light, sandy soil in four or five-inch pots. Place the bulbs so that the tops will be just below the surface, care being taken not to pack the soil, as bulbs will be less likely to push out when root growth commences if the soil is fine and loose. Water thoroughly and set in a cool, dark place for several weeks to allow of sufficient root growth, this being one of the essentials if large flowers and long stems are desired. They should be watered occasionally if soil appears to be drying out. A succession of bloom may be had by bringing the pots into the light at different times. During their growth they should be kept near the light at a temperature of 50 to 70 degrees and watered frequently. Two bulbs in a four-inch pot have been found desirable. A splendid effect is obtained by planting from four to a dozen bulbs in a medium-sized pot. When they show a tendency to bloom just above the bulbs, they must be kept longer in the dark to draw out the flower stems. Most varieties do well when grown indoors.



Prince of Austria.

## Single Early Tulips

This class gives us the first bright flowers in Spring, usually blooming about the middle of April to the first of May. The uniformity of their height and their upright short stems make them very desirable for planting in beds, parkways and similar locations.



Keizerskroon.

|  | Doz.   | 100    |
|--|--------|--------|
| <b>CRAMOISI BRILLIANT.</b> Rich bright red, fine bedder. Height 13 inches. ....  | \$0.60 | \$4.25 |
| <b>COTTAGE MAID.</b> White and pink, the pink shading to carmine rose. Height 11 inches. ....  | .50    | 5.75   |
| <b>COULEUR CARDINAL.</b> Brilliant scarlet red, a large fine shaped flower, fine bedder. Height 13 inches. ....  | 1.00   | 7.50   |
| <b>DIANA.</b> Pure white, large flower and a fine forcer. Height 14 inches. ....   | .65    | 4.50   |
| <b>FLAMINGO.</b> Carmine-rose shaded white, a beautiful flower and much used for forcing. Height 13 inches. ....   | .50    | 5.75   |
| <b>KEIZERSKROON.</b> Red with yellow border, very large flower, one of the most popular early single tulips. Height 16 inches. ....                          | 1.00   | 7.50   |
| <b>LA REINE.</b> White, slightly shaded pink. Height 12 inches. ....   | .60    | 4.25   |
| <b>LADY BOREEL.</b> Pure white, one of the largest and most beautiful whites. Height 12 inches. ....   | .80    | 5.75   |
| <b>LA REMARQUABLE.</b> Dark reddish purple with light border. Height 13 inches. ....   | .80    | 5.75   |
| <b>MCKINLEY.</b> Orange red, large flowers of striking beauty. Height 12 inches. ....  | .80    | 5.75   |
| <b>MON TRESOR.</b> Pure golden yellow, one of the best yellows, large flower, slightly perfumed. Height 12 inches. ....                                      | 1.00   | 7.00   |
| <b>PRESIDENT LINCOLN (Queen of the Violets).</b> Clear violet with light edge, large flowers. Height 12 inches. ....   | .80    | 5.75   |
| <b>PRINCE OF AUSTRIA.</b> Rich orange scarlet, large flower and one of the best scarlet early single tulips. Much used in city parks. Height 15 inches. .... | .80    | 5.75   |
| <b>PROSERPINE.</b> Rich silky carmine-rose, sweet scented, fine bedder. Height 13 inches. ....   | 1.00   | 7.50   |
| <b>ROSE GRISDELIN.</b> Delicate light pink, a beautiful tulip, fine bedder. Height 11 inches. ....   | .60    | 4.25   |
| <b>ROSE LUSANTE.</b> Brilliant deep rosy pink, large flower. Height 13 inches. ....  | 1.00   | 7.50   |
| <b>THOMAS MOORE.</b> Apricot orange, shading at the edges to soft orange yellow; very fine color. Height 11 inches. ....                                     | .70    | 5.00   |
| <b>YELLOW PRINCE.</b> Clear yellow, sweet scented, large flower with long stems. Height 13 inches. ....  | .80    | 5.50   |
| <b>Extra Choice Single Mixed.</b> .....  | .75    | 5.25   |
| <b>Fine Single Mixed.</b> .....  | .60    | 4.25   |

## Breeder Tulips

The Breeders are a most attractive class for the many tulip fanciers who are interested in the revival of the taste for "art colors." The flowers are self colored in dull or soft tones of buff, bronze or purple and among them will be found some of the most splendid and beautiful of all tulips; they are usually large, of excellent form and borne on tall, sturdy stems. Not only on account of their large size and odd but beautiful colors, but also because of their great lasting qualities, this class is becoming very popular for garden decoration. While not so well adapted for forcing as some of the other late flowering tulips they do exceptionally well out of doors, and if planted in irregular groups with the more brilliant Cottage or Darwin sorts they produce a display in the early Summer months that is most effective. Culture: The same as that for Darwin tulips.

|   | Doz.      | 100            |
|---|-----------|----------------|
| <b>BACCHUS.</b> Dark violet blue, exceptionally large egg-shaped flower, strong stem standing upright. Height 33 inches.....                            | Each, 20c | \$2.00 \$15.00 |
| <b>BRONZE QUEEN.</b> Soft bronze, inside golden bronze, very fine. Height 27 inches.....  | .75       | 5.00           |
| <b>CARDINAL MANNING.</b> Deep dull rosy lilac flushed with bronze. Very large and tall flower. Height 28 inches.....                                    | 1.00      | 7.50           |
| <b>CHESTNUT.</b> Black velvety chestnut brown, almost black. Beautiful in combination with the Inglescombe Yellow Cottage Tulip. Height 24 inches.....  | .90       | 6.50           |
| <b>DON PEDRO.</b> Coffee brown shaded maroon, inside rich mahogany. Height 25 inches.....   | Each, 14c | 1.40 10.00     |
| <b>GOLDEN BRONZE.</b> Old gold bronze, very attractive and considered by many the best bronze colored tulip. Height 24 inches.....                      | 1.00      | 7.00           |
| <b>JAUNE d' OEUF (Sunrise).</b> Ruddy apricot with broad bronze-yellow edge. Height 26 inches..   | 1.00      | 7.00           |
| <b>LOUIS XIV.</b> Rich dark purple flushed with bronze and with a golden brown edge, extra large flower on long stout stems. Height 32 inches.....      | Each, 20c | 2.00 15.00     |
| <b>LUCIFER.</b> Bright terra cotta-orange, flowers of large size and of a beautiful attractive color. A grand exhibition variety. Height 26 inches..... | Each, 25c | 2.75 20.00     |
| <b>MEDEA.</b> A beautiful rose-pink flower of large size. One of the best light colored Breeder Tulips. Height 23 inches.....                           | 1.00      | 7.00           |
| <b>PANORAMA.</b> Deep orange red shaded mahogany, beautifully shaped flowers of large size. Height 26 inches.....                                       | 1.00      | 7.00           |
| <b>PRINCE OF ORANGE (Orange Beauty).</b> Light orange-red with distinct light yellow edge. A flower of striking beauty. Height 24 inches.....           | Each, 15c | 1.75 12.00     |



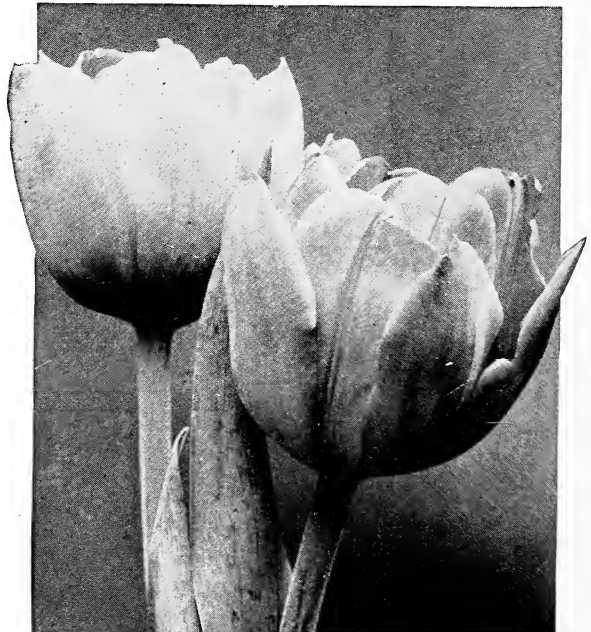
Breeder Tulip, Bacchus.

|  | Doz.      | 100           |
|--|-----------|---------------|
| <b>SALOMON.</b> Beautiful lilac, shaded silvery white, very graceful. Height 28 inches.....                                    | Each, 12c | \$1.25 \$9.00 |
| <b>VELVET KING (Dreadnaught).</b> Shining purplish maroon, deep crimson inside, very attractive flowers. Height 24 inches..... | Each, 12c | 1.35 10.00    |
| <b>VIOLET QUEEN.</b> A clear purple violet flower of stately habit. A Queen among the violets. Height 24 inches.....           | 1.00      | 6.50          |

## Double Early Tulips

The Double Tulips bloom a little later than the Single Tulips and their large peony-like flowers last longer. They are very bright and make a grand showing in the garden and border.

|   | Doz.   | 100    |
|---|--------|--------|
| <b>BOULE DE NEIGE.</b> Pure white peony-like flowers. Height 11 inches.....   | \$0.85 | \$6.25 |
| <b>COURONNE d'OR (Crown of Gold).</b> Deep yellow, flushed orange. Height 13 inches.....  | .80    | 6.00   |
| <b>LUCRETIA.</b> Beautiful deep pink, large size. Height 14 inches.....   | .75    | 5.50   |
| <b>MR. VAN DER HOEF.</b> Pure golden yellow. The best double yellow tulip in existence, very fine. Height 13 inches.....                    | 1.25   | 9.00   |
| <b>MURILLO.</b> Light pink suffused white, fine cut flower. Height 11 inches.....   | .60    | 4.25   |
| <b>RUBRA MAXIMA.</b> Rich dazzling red, very beautiful, fine bedder. Height 11 inches.....  | .80    | 6.00   |
| <b>PEACH BLOSSOM.</b> Deep rosy pink. The finest double pink tulip in existence. A new variety with a wonderful color. Height 11 inches.... | 1.25   | 9.00   |
| <b>TEAROSE.</b> Light saffron yellow, very fine. Height 11 inches.....  | .80    | 6.00   |
| <b>TURBAN VIOLET.</b> Deep rose-lilac, large flower. Height 12 inches.....  | .85    | 6.25   |
| <b>Extra Choice Double Mixed.....</b>   | .75    | 5.50   |



Double Early Tulip, Murillo.

# Darwin Tulips

These beautiful Tulips have well been called "The Tulip Aristocrat." Their brilliant coloring and large cup-shaped flowers borne on long stems make them unsurpassed for May blooming in the garden. Their lasting qualities make them very desirable for cut flowers. They bloom from the middle of May to the first of June.

|  | Doz.      | 100    |
|--|-----------|--------|
| <b>BARONNE DE LA TONNAYE.</b> Bright pink, margined bluish rose. Height 32 inches.....   | \$0.50    | \$3.50 |
| <b>BARTIGON.</b> Fiery crimson with light base, large flower, very beautiful. Height 26 inches..   | .60       | 4.25   |
| <b>BLEU AIMABLE.</b> Light violet with distinct steel-blue shading. A very handsome tulip of good form, a late bloomer. Height 23 inches..   | .70       | 4.75   |
| <b>CENTENAIRE.</b> Dark violet-rose with blue center, large flower of perfect shape, very fine. Height 30 inches.....  | .75       | 5.00   |
| <b>CLARA BUTT.</b> Beautiful salmon pink, one of the most popular pink sorts. Height 24 inches   | .50       | 3.50   |
| <b>DREAM.</b> Delicate lilac lavender, very beautiful. Height 30 inches.....   | .70       | 5.00   |
| <b>EUROPE.</b> Brilliant salmon-scarlet with white base. Height 25 inches.....   | .60       | 4.25   |
| <b>FARNCOMBE SANDERS.</b> Brilliant red with light base, very large flower and considered by many the best all around red variety. Height 30 inches .....                            | .60       | 4.25   |
| <b>FAUST.</b> Black purplish violet, a large and well formed flower. One of the best among the dark violets. Height 28 inches.....   | 1.00      | 7.00   |
| <b>GRETCHEN.</b> Soft pink, outside silvery white, fine bedder. Height 25 inches.....  | .50       | 3.50   |
| <b>GRYPHUS.</b> Dark violet-purple with white center, large flowers on long stems. Height 26 inches .....  | 1.25      | 8.00   |
| <b>KING HAROLD.</b> Deep purple-red, a much admired tulip among the darker shades. Height 24 inches .....  | .60       | 4.25   |
| <b>LA TRISTESSE (Dolores).</b> Deep lilac, lighter at the edges. A very distinct color. Makes a splendid contrast with the Yellow Cottage Tulips. Height 27 inches.....              | .75       | 5.00   |
| <b>LA TULIPE NOIRE (The Black Tulip).</b> Darkest of all tulips. Height 28 inches.....   | .85       | 6.00   |
| <b>LOVELINESS.</b> Soft carmine-rose, fine color, good forcer. Height 23 inches.....   | .60       | 4.25   |
| <b>MADAME KRELAGE.</b> Bright rose-pink with broad edge of bluish pink. Height 32 inches..   | .60       | 4.25   |
| <b>MASSACHUSETTS.</b> Rich pink with lighter edge, a nice tulip of stately habit. Height 26 inches.  | .60       | 4.25   |
| <b>MRS. POTTER PALMER.</b> Deep reddish purple with dark blue base, very beautiful. Height 26 inches .....   | .70       | 5.00   |
| <b>NAUTICAS.</b> Glowing dark purplish rose with dark violet center shaded bronze. Height 30 inches .....  | .60       | 4.25   |
| <b>PAINTED LADY.</b> Creamy white, faintly tinged soft heliotrope, very dainty color. Height 26 inches .....   | .60       | 4.25   |
| <b>PHILIPPE DE COMMINES.</b> Deep velvety dark purplish wine red. A beautiful dark colored tulip borne on long stems. Height 28 inches..   | .70       | 5.00   |
| <b>PRINCESS ELIZABETH.</b> Rich soft rose, shaded lighter at the edges, large flowers with long stout stems, very showy. Height 26 inches...   | .75       | 5.00   |
| <b>PROF. RAUWENHOF.</b> Deep cherry red, extra large flower on long stems; superb for bedding and among shrubs. Height 30 inches.....  | .70       | 5.00   |
| <b>PRIDE OF HAARLEM.</b> Deep rose red with blue base, extra large flowers. The most popular Darwin Tulip and used in large quantities. Always sure to please. Height 32 inches..... | .50       | 3.50   |
| <b>PSYCHE.</b> Delicate salmon-pink, a very nice pink tulip borne on graceful stems. Height 28 inches .....  | .60       | 4.25   |
| <b>PURPLE KING.</b> Shiny black purple, large cup-shaped flower of great substance. The king of the purple varieties. Height 23 inches.....  | 1.00      | 7.00   |
| <b>REV. H. EWBANK.</b> Deep lavender with lighter tint at the edges. The most popular lavender Darwin Tulip. Height 28 inches.....   | .60       | 4.25   |
| <b>RONALD GUNN.</b> Violet blue with white center, very strong stems. Height 28 inches.....  | .75       | 5.00   |
| <b>SCARLET BEAUTY.</b> Intense rich glowing scarlet without any markings on the outside of petals. Without a doubt the most perfect scarlet-red Darwin Tulip. Height 22 inches..     | .50       | 6.00   |
| <b>SIERAAD VAN FLORA.</b> Bright rosy pink shaded lavender with blue base, very effective. Height 24 inches.....   | .60       | 4.25   |
| <b>U. S. A.</b> Beautiful orange-red with lighter edges. A very lovely tulip of a distinct color. Give it a trial. Height 28 inches.....   | Each, 50c |        |
| <b>VALENTIN.</b> Clear blue violet, flowers very large and of great beauty. Height 26 inches..   | .50       | 5.75   |
| <b>VIKING.</b> Dark blue purple. A flower of fine form and of a distinct color. Height 25 inches ..  | .50       | 6.00   |



Princess Elizabeth, Psyche.

|   | Doz.   | 100    |
|---|--------|--------|
| <b>WHITE QUEEN.</b> Lovely soft white, slightly tinged pink. Height 24 inches.....  | \$0.70 | \$5.00 |
| <b>WM. COPELAND.</b> Rose lilac, pleasing color and one of the best for forcing. Height 28 inches .....   | .60    | 4.25   |
| <b>WM. PITT.</b> Brilliant dark red shaded purple on the outer petals, large flower. Height 24 inches .....   | .75    | 5.00   |
| <b>INGLESOMBE YELLOW (The Yellow Darwin).</b> Clear canary yellow. Very effective if planted in combination with the darker colors. Height 22 inches..... | .60    | 4.25   |
| <b>Extra Choice Mixed.</b> A splendid mixture of the finer varieties.....   | .60    | 4.25   |
| <b>Fine Mixed.</b> A good mixture of the standard sorts .....   | .50    | 3.50   |

## Late Double Tulips

**BLUE FLAG or BLEU CELESTE.** Blooming in May with the Darwin and Cottage Tulips, this beautiful variety makes a wonderful showing in the garden and as a cut flower. The flowers borne on long stems are large and double and look more like a Peony than a tulip. The color is clear purplish violet-blue.....

Doz. \$0.90 100 \$6.25



Cottage Tulip, Moonlight.

## Cottage or May Flowering Tulips

The Cottage or May Flowering Tulips compete with the Darwin class for popular favor. This type differs from the Darwins and Breeders in having long pointed flowers of which the petals are sometimes turned back. Some flowers are very prettily shaped and all are borne on nice long stems. They bloom a few days later than the Darwins, often carrying the flowering period of Spring Bulbs into the early days of June, especially if planted in a shady position. The colors are very bright and clear and almost every known shade is to be found among them, especially the pure yellows which are not found among the others. Some varieties are highly perfumed. Planting directions the same as those for Darwin and Breeder Tulips.

|   | Doz.  | 100    |
|---|-------|--------|
| <b>CALEDONIA.</b> Bright orange scarlet, a very effective and showy bedder. The stems are not quite as tall as the average late tulips. Height 18 inches .....  | \$.60 | \$4.25 |
| <b>GESNERIANA SPATHULATA (Major).</b> A bold flower of rich crimson-scarlet with blue-black center. Very effective if planted in combination with yellow or white. Height 24 inches .....   | .65   | 4.25   |
| <b>GOLDEN CROWN.</b> Yellow, slightly edged red, a fine bedder and cut flower. Height 24 inches .....   | .60   | 4.25   |
| <b>INGLESOMBE YELLOW.</b> Clear canary yellow. The flower is beautiful shaped on the order of a Darwin and is therefore called "The Yellow Darwin." Height 22 inches..  | .60   | 4.25   |
| <b>INGLESOMBE PINK (Salmon Queen).</b> Beautiful clear salmon-pink with blue base, very attractive. Height 24 inches.....   | .65   | 4.25   |
| <b>JOHN RUSKIN.</b> The beautiful color combination of this tulip is difficult to describe. Salmon-rose shaded magenta, edged pale yellow. Large egg-shaped blooms of graceful form and habit. Height 20 inches.....                    | .80   | 5.75   |
| <b>LA MERVEILLE.</b> Orange-red with recurving petals, sweet scented, large flower of exquisite form. Height 20 inches.....   | .60   | 4.25   |
| <b>MOONLIGHT.</b> Soft pale yellow, large oblong shaped flowers on tall stems. A superb variety. Height 22 inches.....  | .90   | 6.25   |
| <b>MRS. MOON.</b> Large pure yellow flower with pointed and reflexed petals. Distinctly perfumed. Without question the finest late yellow tulip in existence. Created a sensation in Paris when first introduced. Height 25 inches..... | 1.00  | 7.00   |
| <b>ORANGE KING.</b> Bright glowing orange tinged rose, sweet scented. A beautiful flower and one of the best of its class. Height 24 inches. ....   | .60   | 4.25   |

|  | Doz.  | 100    |
|--|-------|--------|
| <b>PICOTEE (Maiden's Blush).</b> White, bordered and tipped rosy pink, long recurving petals. The most popular white and pink tulip. Height 18 inches .....                                      | \$.65 | \$4.25 |
| <b>SARAH BERNHARDT (Le Reve).</b> A very fine combination of rainbow colors, has a beautiful globular shaped flower on strong, tall stems. Height 22 inches.....                                 | 1.15  | 8.00   |
| <b>SIR HARRY.</b> Beautiful pale lavender-pink with yellow base. Keeps its color well in hot weather. Height 20 inches.....  | 1.00  | 7.00   |
| <b>THE FAWN.</b> Large egg-shaped flowers of a grayish fawn or dove color, blended with lavender and light blush-rose margin. A very pretty tulip and highly recommended. Height 22 inches ..... | .65   | 4.25   |

## Parrot Tulips

Remarkable for their fantastic form and coloring. The flowers are large and each is gracefully cut and fringed while the colors are of such wonderful combinations that they resemble the plumage of a beautiful parrot. They bloom about the same time as the Darwin and Breeder Tulips. The bulbs are not as large as the other varieties of tulips but they have large flowers.

|  | Doz.  | 100    |
|--|-------|--------|
| <b>ADMIRAL DE CONSTANTINOPLE.</b> Red with an orange shading.....                | \$.70 | \$4.50 |
| <b>COULEUR CAFE (Cafe Brun).</b> Brown-purplish on yellow ground.....            | .70   | 4.50   |
| <b>CRAMOISI BRILLIANT.</b> Rich deep red, the best red colored parrot tulip..... | .70   | 4.50   |
| <b>LUTEA MAJOR.</b> Brilliant yellow, striped scarlet and green.....             | .70   | 4.50   |
| <b>MARKGRAAF VON BADEN.</b> Brownish red, feathered orange and purple.....       | .70   | 4.50   |
| Extra Choice Mixed of the above named varieties. ....                            | .70   | 4.50   |



Parrot Tulip, Lutea Major.



# Narcissus or Daffodils

(All Mammoth Double Nose Bulbs)  
(American Grown)

The graceful and charming Narcissus or Daffodils are being planted more every year because they are so adaptable. Most varieties do splendidly in the house, and they are perfectly hardy for outdoor planting. When once established they do not need to be reset for several years and will thrive in almost any good garden soil. A cool and grassy place is favorable for naturalizing. For outdoor planting, plant 6 inches deep and 5 to 8 inches apart. For house culture put 3 to 4 bulbs in a 6-inch pot and treat the same as early Tulips and Hyacinths. In describing Narcissus reference is made to the "perianth" and "trumpet." The latter is the long center, funnel-shaped tube, and the "perianth" is the outer row of petals or wings.

|   | Doz.   | 100     |
|---|--------|---------|
| <b>BICOLOR VICTORIA.</b> Rich yellow trumpet with creamy white perianth.....        | \$1.50 | \$12.00 |
| <b>EMPEROR.</b> Deep yellow trumpet with broad primrose perianth .....              | 1.50   | 12.00   |
| <b>GOLDEN SPUR.</b> Deep yellow perianth, large wide golden yellow trumpet.....     | 1.50   | 12.00   |
| <b>KING ALFRED.</b> The king of all single daffodils, extra large, pure yellow..... | 3.00   | 23.00   |
| <b>SIR WATKIN.</b> Primrose perianth, golden yellow cup .....                       | 1.50   | 12.00   |
| <b>POETICUS ORNATUS.</b> Pure white cup, yellow margined scarlet .....              | 1.00   | 7.00    |
| <b>VON SION.</b> The large double yellow trumpet daffodil .....                     | 1.50   | 12.00   |

# Jonquils

These small graceful Narcissus are very much admired for their graceful, sweet-scented yellow flowers. They are very satisfactory for outdoors when planted in large groups or masses, and make splendid edgings to beds of some of the taller Narcissus. For indoor growing three or four bulbs should be put in a 4- or 5-inch pot.

|   | Doz.   | 100    |
|---|--------|--------|
| <b>CAMPERNELLE.</b> Single, large yellow florets, very fragrant ..... | \$1.25 | \$9.00 |



Von Sion.

# Hyacinths

The Hyacinth is so well and favorably known that it is unnecessary to give any detailed description of its broad upright spike or truss, usually thickly set with bell-shaped flowers of beautiful wax-like texture. It succeeds well in the house and garden, adorning both with the varied colors and delicious fragrance of its showy flowers. Its culture is about the same as that of the tulips, except that for outdoor planting the bulbs should be planted 5 inches deep and from 5 to 8 inches apart, and should have a little more protection during the cold Winter months, as they are not quite as hardy as the tulips.

|   | Mammoth Bulb |        | 2nd Size |        | 3rd Size |        |
|---|--------------|--------|----------|--------|----------|--------|
|   | Each         | Doz.   | Each     | Doz.   | Each     | Doz.   |
| <b>GERTRUDE.</b> Deep pink .....                    | \$0.25       | \$2.50 | \$0.20   | \$2.00 | \$0.15   | \$1.75 |
| <b>GRAND MAITRE.</b> Dark blue .....                | .25          | 2.50   | .20      | 2.00   | .15      | 1.75   |
| <b>LADY DERBY.</b> Light pink .....                 | .25          | 2.50   | .20      | 2.00   | .15      | 1.75   |
| <b>LA VICTOIRE.</b> Light red .....                 | .25          | 2.50   | .20      | 2.00   | .15      | 1.75   |
| <b>L'INNOCENCE.</b> Pure white .....                | .25          | 2.50   | .20      | 2.00   | .15      | 1.75   |
| <b>LORD BALFOUR.</b> Lilac-rose tinged violet ..... | .25          | 2.50   | .20      | 2.00   | .15      | 1.75   |
| <b>QUEEN OF THE BLUES.</b> Light blue .....         | .25          | 2.50   | .20      | 2.00   | .15      | 1.75   |
| <b>YELLOW HAMMER.</b> Cream yellow .....            | .25          | 2.50   | .20      | 2.00   | .15      | 1.75   |



Gertrude.

### NO EXTRA CHARGE

All prices on bulbs are prepaid. No extra charge for postage. See Special Offer on back cover.

# Crocus

Among the earliest to blossom in Spring is this beautiful little flower, lifting its head almost before the snow has disappeared. Although most showy when massed in large beds, or when planted in lines of distinct colors, a very desirable effect is produced by setting Crocuses here and there over the lawn. It is only necessary to lift the turf and insert bulbs about 2 inches deep. This gives a pretty effect in early Spring and the tops can be cut along with the grass safely when the first mowing is made. Indoors the Crocus can be easily forced if growth is maintained at a low temperature. Put 6 to 12 bulbs of the named varieties in a 6- or 8-inch pot. Keep cool, well-watered, gradually bring to full light and give plenty of fresh air.

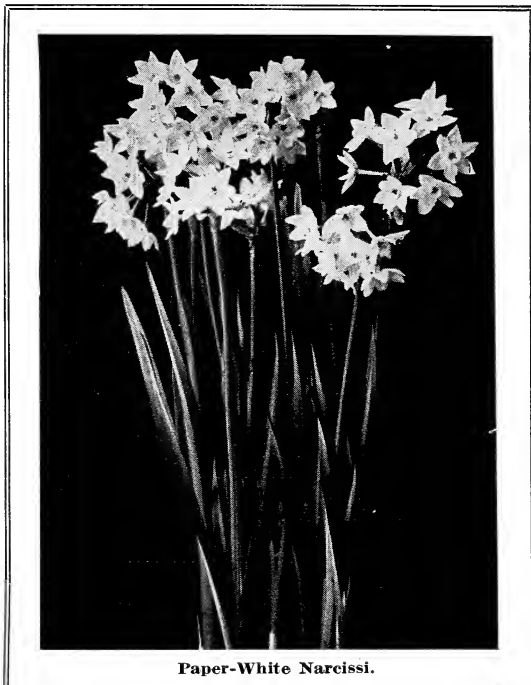
|  |        |        |         |
|--|--------|--------|---------|
|  | Doz.   | 100    | 1000    |
| <b>BARON VON BRUNOW.</b> Dark blue.....            | \$0.40 | \$2.75 | \$22.00 |
| <b>MONT BLANC.</b> Pure white.....                 | .40    | 2.75   | 22.00   |
| <b>MAMMOTH YELLOW.</b> Rich yellow.....            | .40    | 2.75   | 22.00   |
| <b>SIR WALTER SCOTT.</b> Striped purple..          | .40    | 2.75   | 22.00   |
| <b>MIXED COLORS</b> of above named varieties ..... | .40    | 2.75   | 22.00   |

## Bulbs for Growing in the House

### Paper-White Narcissus

(American Grown)

These very popular flowers of great fragrance are seen in practically every home during the Winter months. They are easily grown in bowls with gravel and water, and will bloom



Paper-White Narcissi.

in four to six weeks from planting. Put gravel or pebbles an inch or two thick in the dish in which they are to be grown, set the bulbs on this and put enough gravel or pebbles around them to keep them from falling over. Fill the dish with water, and set in a dark place for four or five days, until the roots start freely, then bring them to the light and keep in any ordinary living room. You can enjoy them all Winter by starting a few at intervals of ten days or two weeks.

|  |      |        |
|--|------|--------|
| <b>PAPER WHITE GRANDIFLORA.</b> Pure white flowers in clusters, very fragrant..... | Doz. | \$1.00 |
| Pebbles for growing bulbs in bowls. Lb., 5c.                                       |      |        |
| Pearl Shells, for growing bulbs in bowls. Lb., 15c.                                |      |        |
| Dutch Bulb Fibre for growing bulbs in bowls. Box, 20c.                             |      |        |

## Chinese Sacred Lily

(American Grown)

(Same Culture Directions as the Paper-White Narcissus)

|  |               |             |
|--|---------------|-------------|
|  | Mammoth Bulbs | Doz.        |
|  | Each          |             |
| <b>WHITE FLOWERS</b> with golden yellow cup, very fragrant ..... |               | \$0.20 2.00 |

## Freesias

One of the best and most easily grown Winter flowering bulbs. They are very valuable for cutting. The flowers are of delightful fragrance. They do well in light, rich soil about 4 to 5 bulbs in a 6-inch pot, and kept in a warm, moist place until the plants are well-started. Be careful to have good drainage. The leaves and stalks are tender and it is desirable to support them with small stakes.

|   |        |        |
|---|--------|--------|
|   | Doz.   | 100    |
| <b>PURITY.</b> Large white flowers, very fragrant..             | \$0.40 | \$2.75 |
| <b>RAINBOW MIXED.</b> Pleasing colors of different shades ..... | .60    | 4.00   |

## Autumn-Flowering Crocus

**CROCUS SPECIOSUS.** This is an early flowering forcing variety of delicate refinement and surpassing beauty. Its earliness and easy growth makes it very desirable for blooming in the house. Thrives and blooms profusely in a few weeks after started in pans, bowls or saucers with gravel or fibre. The color is a rich deep blue. Be sure and start a few in the house this Fall .....

|  |     |      |
|--|-----|------|
|  | .75 | 5.00 |
|--|-----|------|



Freesias.



Madonna Lily.



Grape Hyacinths.

## Calla Lilies

For Winter blooming in the house or window the Calla Lily requires only simple care—when you get the bulbs, put them in rich soil in a 6-inch pot and give plenty of water, heat and light. Let the bulb rest next Summer by just turning the pot on its side some place where water cannot reach it. Repotting in the Fall is necessary. If you wish you can set the Calla bulbs that bloomed in the house during the Winter out-of-doors in the border next Spring. They give splendid bloom during the Summer.

Doz. 100

**WHITE CALLA LILY.** Pure white flowers.  
..... Each, 35c \$3.00

**YELLOW CALLA LILY.** Rich golden yellow  
flowers ..... Each, 30c 3.00

## Madonna Lily

(Lilium Candidum)

Also known by many as "June Lilies." This is one of the oldest, loveliest and best known Lilies. It is the earliest white outdoor garden lily. You have often admired it. Has a rich perfume and snow white flowers from 3 to 15 on a stem. It is very hardy and will thrive in any good garden soil, preferring plenty of light and air. It blooms from June to the middle of July and massed with Perennial Larkspur it makes a wonderful effect. Should be left undisturbed for several years. Do not plant too deep, cover about 4 inches. Large bulbs..... Each, 35c 3.50

## Grape Hyacinth

(Muscari)

Beautiful little flowers for planting in small beds, edging, etc. Once planted they multiply rapidly and send up flower stems by the score each year. They are perfectly hardy.

**BLUE.** Pretty little spikes of dark blue flowers,  
an old garden favorite..... .50 3.25

## SPECIAL TULIP COLLECTION on back cover



Calla Lily.

## Blue Bells

(Scilla)

Doz. 100

**SIBIRICA** (Also called Blue Bells). The lovely little bright blue flowers are produced very early and in great profusion. Very suitable for small beds, edging and borders. Very attractive when planted in conjunction with Snowdrops. Plant any time in the Fall until the ground freezes. Plant about 3 inches deep...\$0.70 \$5.00

## Snowdrops

(Galanthus)

In early Spring there is nothing more beautiful than these little Spring flowers with their dainty drooping heads of glistening pure white. In beds of Tulips and Hyacinths, Snowdrops flower while these bulbs are just moving to the surface, and when the flowers are over, there remains a groundwork of green foliage. Perfectly hardy and will grow almost anywhere. Plant bulbs about 2 inches deep.

Single ..... .60 4.00  
 Double ..... .75 5.00

## Ixias

An easily forced Winter flowering bulb, which is rapidly coming into favor, as its merits become better known. The flowers include many shades of yellow, pink, scarlet and crimson; are borne on long stems and are splendid for cutting. .50 3.50

## Colchicum

(The Wonder Bulb)

Blooms without vase, soil, water or care. Unique for table, room or window decoration. Rosy tinted blossoms shade to a pearly white. They resemble a crocus blossom. Simply place the bulbs in a dish, bowl, saucer or on the table or window sill in a little light and watch its beauty unfold. As the blossoms fade and drop cut them off and others will follow in quick succession, each bulb producing from six to ten flowers. When the blooming has ceased, the bulbs may be potted or planted in the open garden or lawn, where the following Spring they will develop a beautiful, broad deep-colored foliage. Remove from bed about July 1st, dry the bulbs in darkness for a few weeks and use for indoor decoration as at first. Each, 25c; doz., \$2.50.



Colchicum.

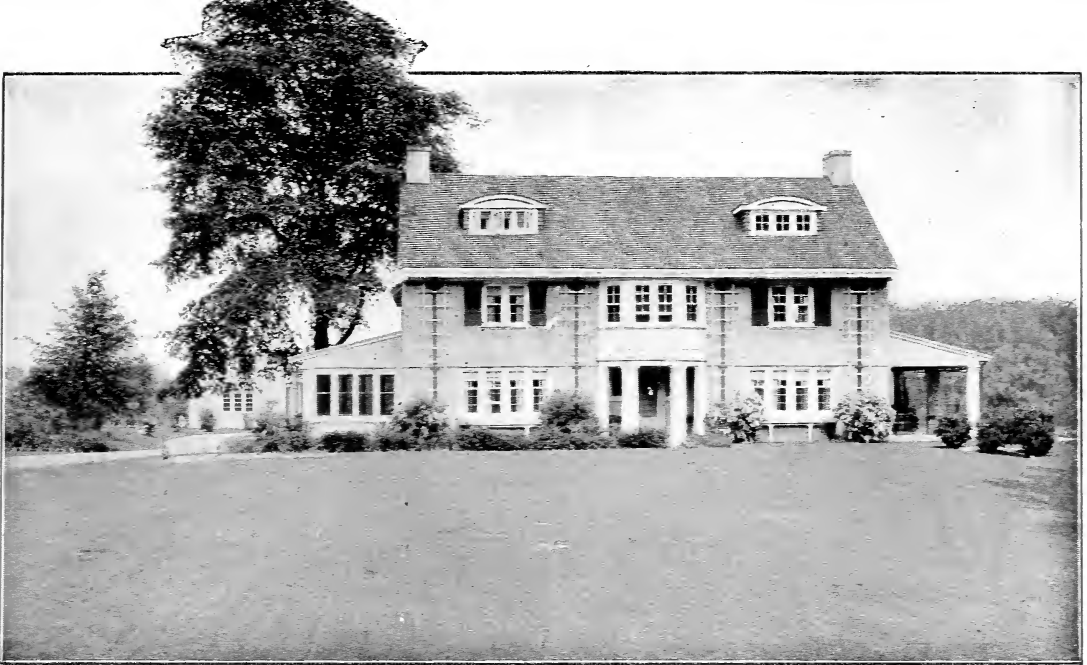


Festiva Maxima.

## Peonies

The Peony is perhaps the oldest and best known inhabitant of the flower garden and rivals the rose in coloring and perfection of bloom. The flowers are perfectly double and very large. They are not troubled with insect pests or disease and the dark green foliage is exceptionally clean and attractive. Peonies will do well in almost any garden soil but the better enriched the soil and the more liberal the space allowed for each plant, the more vigorous the growth. In planting the roots, cover the eyes with about 2 or 3 inches of soil. A deep, lively loam is preferable and the ground about the plants should be worked well. Fall planting is the best although they can be planted in the Spring also.

- |  |             |
|--|-------------|
|  | <b>Each</b> |
| <b>FESTIVA MAXIMA.</b> This is the most popular and beautiful White Peony. Flowers are extra large and of the double rose type. The edges of center petals are dotted with carmine spots. It is a free bloomer and very early .....  | \$0.60      |
| <b>EDULIS SUPERBA.</b> This is one of the earliest varieties, usually coming into bloom on Decoration Day. Color is a brilliant rose pink. Flowers are large and double and very fragrant.....   | .60         |
| <b>FELIX CROUSSE.</b> Brilliant dazzling red. Flowers are very double and solid, exceptionally bright and effective. None better.....  | .75         |
| <b>KARL ROSENFELD.</b> Rich velvety bright red. Large flowers of the semi-rose type. A sturdy grower and free bloomer. Medium early. Considered one of the best all around red peonies.....  | 1.50        |
| <b>OFFICINALIS RUBRA PLENA.</b> The old-fashioned red peony of our grandmother's garden. It is perhaps the earliest of all peonies, usually in full bloom before Decoration Day. Large double flowers of a rich dark red color .....   | 1.25        |
| <b>MONS. JULES ELIE.</b> This is considered by many the finest of all peonies. Flowers are of immense size, full and globular in form. Wonderful glossy flesh-pink shading to deeper rose-pink at the base. When fully opened it looks like a giant Chrysanthemum. Fine cut flower ..... | 1.25        |



# How to Care for Your Lawn

Nothing will add to the appearance and, for that matter, actually enhance the value of your home to such a degree as a well-made well-kept lawn. A good lawn is easily made.

**Soil and Preparation.** The ideal lawn soil is a well drained, moderately rich and moderately heavy loam. If raw sub-soil has been exposed in grading, cover or replace it to a depth of 8 inches with top soil from an old meadow or garden. Avoid fresh stable manure, as it is almost invariably full of weed seeds. Vigoro or Bonemeal is excellent. Spade up the soil to a depth of 6 to 8 inches, mixing in the manure or other fertilizer, and then rake the surface fine and level.

**Seeding.** Sow the seed evenly over the surface. To insure a thick, even stand, use plenty of seed. Then go over the surface with a roller to compact the soil about the seed. In shady places sow Shadyland Lawn Seed.

**Watering.** If the soil contains plenty of moisture-retentive humus, little artificial watering should be required. If it becomes necessary to use the hose during the dry spells, an occasional thorough soaking is better than frequent light sprinklings.

## Lawn Seed

We use only the very best grades of Grass Seeds and White Clover, especially selected for purity and high germination. All solid seed, no chaff. Do not waste time and money by sowing cheap grass seed which is mostly chaff. Sow our Fancy Mixed Lawn Seed and enjoy a beautiful lawn. One pound will sow about 300 square feet.

|   | Lb.    |
|---|--------|
| FANCY MIXED WITH WHITE CLOVER.....      | \$0.50 |
| SHADY GRASS SEED. For shady places..... | .50    |
| WHITE DUTCH CLOVER.....                 | .75    |
| KENTUCKY BLUE GRASS.....                | .50    |
| RED TOP. Solid seed.....                | .50    |
| RYE GRASS.....                          | .30    |
| ORCHARD GRASS.....                      | .35    |
| CHEWINGS FESCUE.....                    | .60    |
| CREEPING BENT GRASS.....                | 1.50   |

## Fertilizers and Plant Food

**VIGORO.** 100-lb. bag, \$5.00; 50-lb. bag, \$3.00; 25-lb. bag, \$1.75; 5-lb. pkg., 50c.

**BONE MEAL.** 100-lb. bag, \$3.50; 50-lb. bag, \$2.00; 25-lb. bag, \$1.00; 5-lb. pkg., 35c.

**SHEEP MANURE.** 100-lb. bag, \$2.50; 50-lb. bag, \$1.50; 25-lb. bag, 80c; 5-lb. pkg., 35c.

**LIME.** (For sweetening the soil). 10-lb. pkg., 25c; 50-lb. sack, 75c.

**PLANT FOOD.** (In Tablet Form). For all Plants—indoors and out.

We also handle a full line of Sprayers and Spraying Material. If in the market for any of these goods we will be glad to quote you our best prices.

## Stim-U-Plant

Plant Stimulant Tablets

THE IDEAL YEAR-ROUND FEEDING METHOD

These tablets are rich in plant food, containing 11 per cent Nitrogen, 12 per cent Phosphoric Acid and 15 per cent Potash. They keep well, are odorless and clean. Compare this analysis with that of any other fertilizer.

Plants in pots, especially when growing vigorously, soon use up the nourishment that is in the soil, therefore to keep your plants healthy, feed them about every ten days or two weeks and avoid the error of feeding too much at one time.

Have Stim-U-Plant Tablets on hand so you can apply them to your outside plants as soon as they start growth and note the amazing results.

Fine for all kinds of vegetables, flowers, bulbs and shrubs. They are a proven success with rose growers, nurserymen, landscape gardeners, strawberry growers and market gardeners. Complete directions with every package. Easy to use. Simply insert in soil near plants, or dissolve in water at the rate of four tablets to the gallon and apply as liquid manure. Price, 30 tablets, 25c; 100 tablets, 75c; 1000 tablets, \$3.50.

# HOLLAND-AMERICAN SEED CO.

## GRAND RAPIDS, MICHIGAN

# Special Darwin Tulip Collection



30 Bulbs  
in ten different  
colors mixed

\$1.00



This is a very  
fine selection  
for borders or  
bed edging  
where mixed  
colors are  
wanted.

A very  
high class  
selection.



30 Bulbs for \$1.00